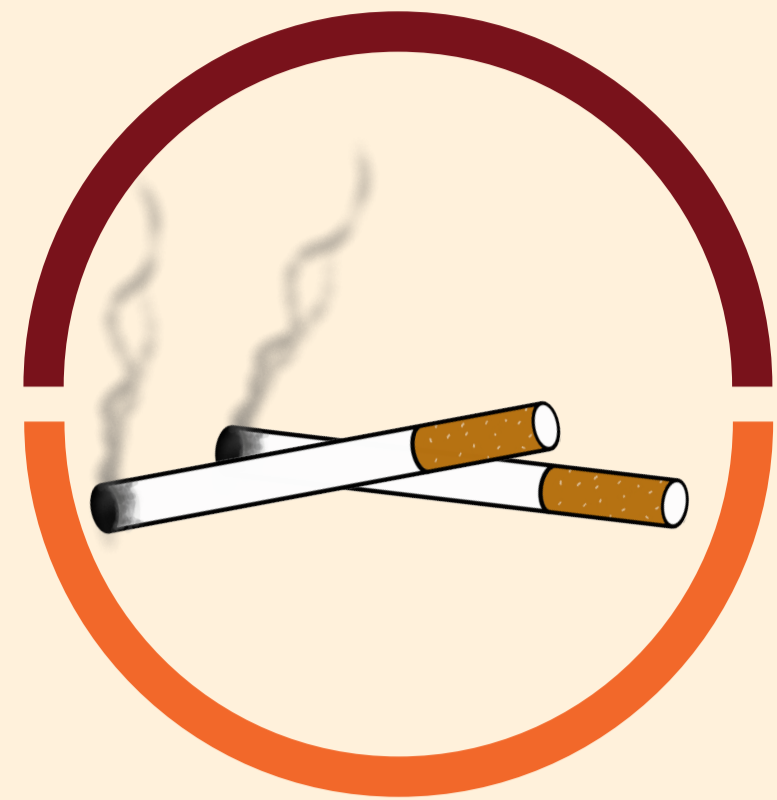


MADARAKA EXPRESS PASSENGER SERVICE CONDITIONS OF CARRIAGE

PROHIBITED ITEMS



ALCOHOLIC BEVERAGES.



SMOKING RESTRICTIONS: PASSENGERS ARE NOT ALLOWED TO SMOKE IN ANY KENYA RAILWAYS PREMISES, STATIONS EXCEPT AT THE DESIGNATED AREAS. SMOKING IS NOT ALLOWED ONBOARD PASSENGER TRAINS.



NARCOTIC OR CONTROLLED DRUGS E.G. COCAINE, MARIJUANA, HEROIN, MANDRAX AND MIRAA/MUGUKA.



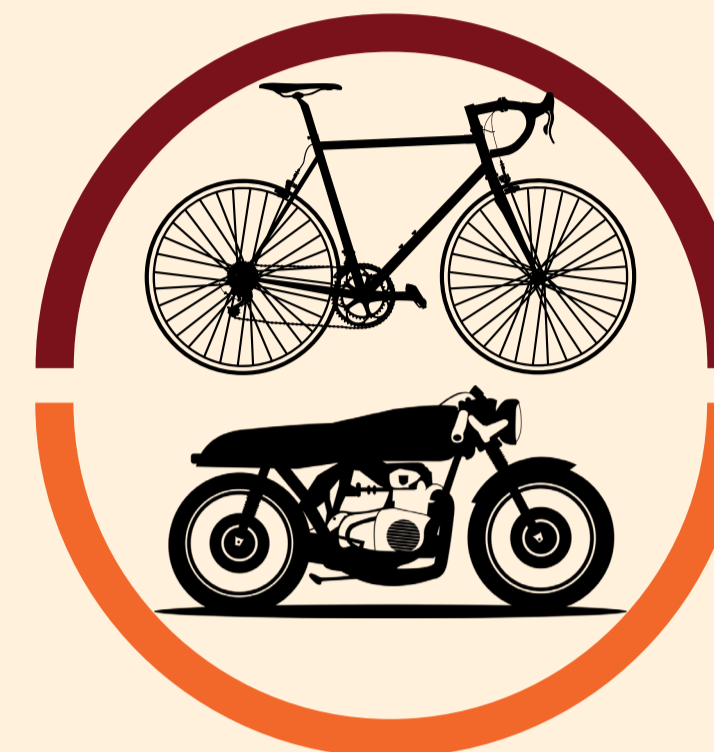
ASHES, LABORATORY SAMPLES.



ANY ANIMAL TROPHIES INCLUDING WILD ANIMAL SKINS/HIDES, HORNS, COWRIE SHELLS.



ANY LIVE ANIMALS/PETS.



WE DO NOT ALLOW BICYCLES ONBOARD THE PASSENGER TRAINS AT THE MOMENT DUE TO UNAVOIDABLE REASONS.



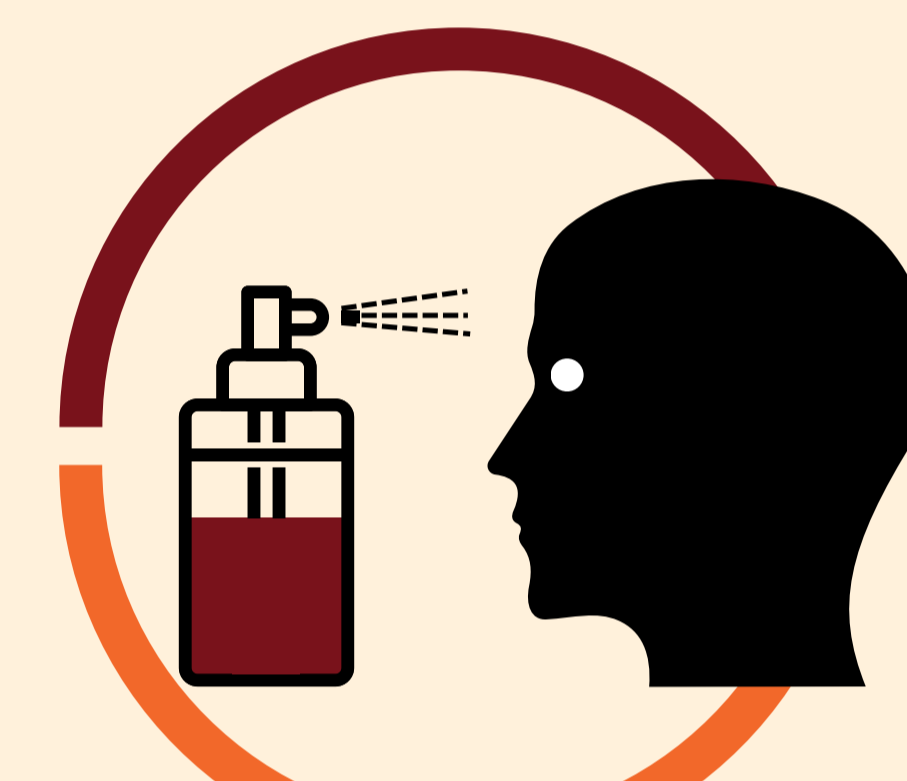
COMPRESSED GASES (FLAMMABLE, NON-FLAMMABLE, OR POISONOUS) SUCH AS PROPANE, AQUALUNG CYLINDERS, EMPTY GAS CYLINDERS.



OXIDIZING SUBSTANCES SUCH AS BLEACHING POWDER AND PEROXIDES.



FIRE ARMS, AMMUNITION, EXPLOSIVES, FIREWORKS, AND FLARES. HOLDERS OF REGISTERED FIREARMS SHOULD INFORM THE KENYA RAILWAYS SECURITY TEAM FOR GUIDANCE/ASSISTANCE.



DISABLING DEVICES SUCH AS MACE, TASER, PEPPER SPRAYS WITH IRRITANT PROPERTIES, PROCESSED PEPPER AND TEAR GAS. .



FLAMMABLE MATERIALS AND LIQUIDS SUCH AS TURPENTINE, PARAFFIN/KEROSENE, GASOLINE, PETROL, PAINTS, ADHESIVES, ELECTRIC CIGARS, VAPE, LIGHTER FUELS E.G. BUTANE, ABSORBED FUEL, BATTERY-POWERED, NOVELTY LIGHTERS AND MATCH BOXES.



SECURITY-TYPE CASES/BOXES INCORPORATING GOODS SUCH AS LITHIUM BATTERIES OR PYROTECHNICS, DYNAMITE.



POISONS SUBSTANCES SUCH AS ARSENIC, CYANIDES, OR INSECTICIDES.



CORROSIVE MATERIALS SUCH AS MERCURY, ACIDS, ALKALIS, AND WET CELL BATTERIES.



RADIOACTIVE MATERIALS.

- ANY OTHER SUBSTANCES NOT COVERED HERE ABOVE OR OTHER ITEMS WHICH ARE DEEMED SECURITY HAZARDS BY LOCAL LAWS, OR THAT HAVE SIMILAR FUNCTIONS TO THE ABOVE ITEMS BUT WHICH MAY PRESENT DANGER TO KENYA RAILWAYS PREMISES/TRAINS.
- UNRULY BEHAVIOUR AND ABUSIVE LANGUAGE WILL NOT BE ENTERTAINED.

RESTRICTED ITEMS

FOR THE SAFETY AND SECURITY OF PASSENGER SERVICES OPERATIONS, THE FOLLOWING ITEMS ARE RESTRICTED IN KENYA RAILWAYS PREMISES AND TRAINS:



MEDICINAL PRESCRIPTION E.G. SYRUPS, INSULIN.



CREAMS, LOTIONS, OILS, GELS AND AEROSOL SPRAYS E.G. BODY SPRAYS, HAIR SPRAYS SHAVING CREAM, SUNSCREEN.. NOT EXCEEDING 500MLS.



MUSICAL EQUIPMENT (SUCH AS PIANO, GUITARS, VIOLINS, SAXOPHONES), EXTERNAL SPEAKER DEVICES SUCH AS BOOM BOX, RADIO, CELL PHONE.



WORKSHOP TOOLS E.G. HAMMERS, PLIERS, SCREWDRIVERS SHOULD BE SURRENDERED TO KENYA RAILWAYS SECURITY TEAMS AT THE STATIONS.

- ANY OTHER ITEMS WHICH ARE DEEMED SECURITY HAZARDS BY LOCAL LAWS OR THAT HAVE SIMILAR FUNCTIONS TO THE ABOVE ITEMS